

LANDSCAPE CITYSCAPE

An exhibition of paintings by Paul Joseph-Crank & Krystyna Wojcik

The Dolby Gallery, Oundle



Late Evening, Luggala
Acrylic on canvas 610mm x 610mm
£390



Early Morning, Venice
Acrylic on canvas 600mm x 800mm
£550

LANDSCAPE CITYSCAPE

Paintings by Paul Joseph-Crank
& Krystyna Wojcik

13th April – 27th April 2013
The Dolby Gallery, Oundle

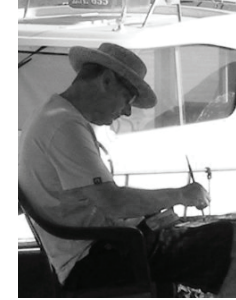


Reflections, St Marks Square
Acrylic on canvas 800mm x 600mm
£550

Last Catch of the Day, Padstow
Acrylic on canvas 765mm x 505mm
£495



The Steps Down to the Harbour
Acrylic on canvas 405mm x 405mm
£350



Paul Joseph-Crank

Paul studied fine art in Manchester before taking up a career in graphic design and illustration. Since then he has worked for a variety of clients in the UK, Europe and the USA. From 1987 onwards he has been a partner in a local graphic design company.

Paul works from sketches and photographs, using them as a drawing aid to capture images that he edits to use as a framework for a painting or print.

He exhibited regularly from his teens, alongside his parents, in his home town of Manchester as well as in galleries in Cheshire and the Lake District. His works have been exhibited in one-man shows, joint shows and mixed exhibitions at the Arndean Gallery in Cork Street London, Bedford Street Gallery in Woburn, Blackfriars Arts Centre in Lincolnshire, David Holmes Gallery and the Guildenburgh Gallery in Peterborough, The Wall Gallery in Ely and Woodbine Contemporary Arts in Uppingham.

He has been represented by various galleries at art fairs including Cannes International Art Fair; Cork Art Fair; Edinburgh Contemporary Art Fair; Canterbury Art Fair; Cambridgeshire Contemporary Art Fair and regularly displays at the Affordable Art Fairs in Battersea, Bristol and Amsterdam.

Paul is currently represented by The Dolby Gallery in Oundle, Woodbine Contemporary Arts in Uppingham and The Bedford Street Gallery in Woburn, Bedfordshire.

His work is in collections in the UK and Ireland including acquisition of works by British Telecom headquarters in London and Pizza Express.

Summer Afternoon, Aix-En-Provence
Acrylic on canvas 510mm x 760mm
£495



Lunch On The Harbour
Acrylic on canvas 610mm x 610mm
£425



Evening Sunlight, Naples
Acrylic on canvas 505mm x 765mm
£495



Putting On The Covers, Grand Canal
Acrylic on canvas 300mm x 300mm
£295



Fruit Market, Naples
Acrylic on canvas 900mm x 600mm
£680



Across from Caley Mill
 Acrylic on canvas 610mm x 610mm
 £390



Krystyna Wojcik

“Painting landscapes is an endless joy for many reasons – the constantly changing light conditions and the fact that there is always a different view to be seen are two of the most basic – even just by moving a few feet to the left or right perspectives alter. And although I have a favourite palette of colours, different counties and different countries require different treatment which further enhances the challenge and sense of achievement.

I paint with artists watercolours most often because I love the transparency of some of the colours and the challenge of the unpredictability of the process (my temperament probably influences this choice too!). Wherever I am, if I see a sight, light or mood that appeals to me I either make a quick sketch and note colours or, if there’s no time to sketch, I take a photo (I always carry a camera). I never attempt to replicate exactly what I have seen – that doesn’t appeal to me. I try to paint an atmosphere that I have felt was there.”

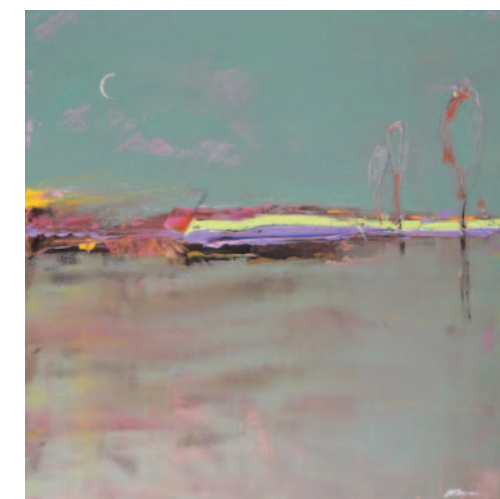
Since 2004 Krystyna has exhibited each year at the AFF (Affordable Art Fair) shows in London, Bristol, Edinburgh and Amsterdam.

Other exhibitions:

Solo shows at WCA in Uppingham and The Dolby Gallery Oundle.
 Joint shows at The Wall Gallery Ely and WCA in Spalding.

Mixed shows including:

Blackfriars Arts Centre Boston, Cambridge Art Fair, Canterbury Art Fair, Chelsea Art Fair, Cork Art Fair, Dodo Gallery Cambridge, Doric Arts Kings Lynn, Eastern Open Kings Lynn, Woodbine Contemporary Art Spalding, Victoria Fearn Gallery Cardiff.



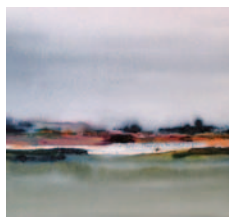
Black Sky, Seillans
 Acrylic on canvas 610mm x 610mm
 £390

Canale Di San Marco I
 Watercolour 730mm x 530mm (framed size)
 £370



Late January, Ostra Skala
 Watercolour 730mm x 530mm (framed size)
 £370

*Between Luggala and
 Djouce Mountain (detail)*
 Watercolour
 530mm x 430mm
 (framed size) £250





Midday Sun, Krakow
Watercolour 500mm x 500mm (framed size)
£350



Kiosk in the Square, Krakow
Watercolour 730mm x 530mm
(framed size)
£370

Amongst the Ruins, Pompeii
Watercolour
500mm x 500mm
(framed size)
£350



Across to Mijas
Acrylic on canvas
610mm x 610mm
£390



Winter Haze, Buttermere
Watercolour
530mm x 430mm
(framed size)
£250



East of Ardmere
Watercolour
530mm x 430mm
(framed size)
£250

Paintings by Paul Joseph-Crank & Krystyna Wojcik

13th April – 27th April 2013
The Dolby Gallery, Oundle

Private View Friday 12th April 2013
7 – 9pm



The Dolby Gallery
30 West Street Oundle, Northants PE8 4EF
T: 01832 273801 E: simon.dolby@sky.com www.dolby-gallery.com

Open Mon–Sat 10am–1pm and 2pm–5pm
Closed Wednesday afternoons

This catalogue shows a small selection of the work that will be on display at the exhibition.